

# The changing policy and regulatory context (WP4)

CREATE Launch Event, London, September 23, 2015

Dr. Charlotte Halpern, Associate Research Professor  
Sciences Po, Centre d'études européennes  
[charlotte.halpern@sciencespo.fr](mailto:charlotte.halpern@sciencespo.fr)

# Explaining the shift towards sustainable cities policies: which factors?

## Traffic growth policies

Rapid urban economic growth leads to car ownership & use : strict zoning policies, discouraging walking and cycling, declining investments in public transport etc.

## Traffic mitigation policies

Problems arising (road congestion, noise, air pollution etc.) and the search for alternatives to car use.

## Sustainable cities policies

Emphasis on urban quality of life: reallocation of roadspace to other transport modes, demolishing Stage 1 infrastructures and networks, etc.





# Context in all 5 cities

- Rapid demographic and economic growth
- Complex urban societies
- Growing technological needs, information and knowledge
- Reduced investment capacity from the public sector
- Additional opportunities for a rapidly evolving industry
- Multi-level governance from EU level to Boroughs.



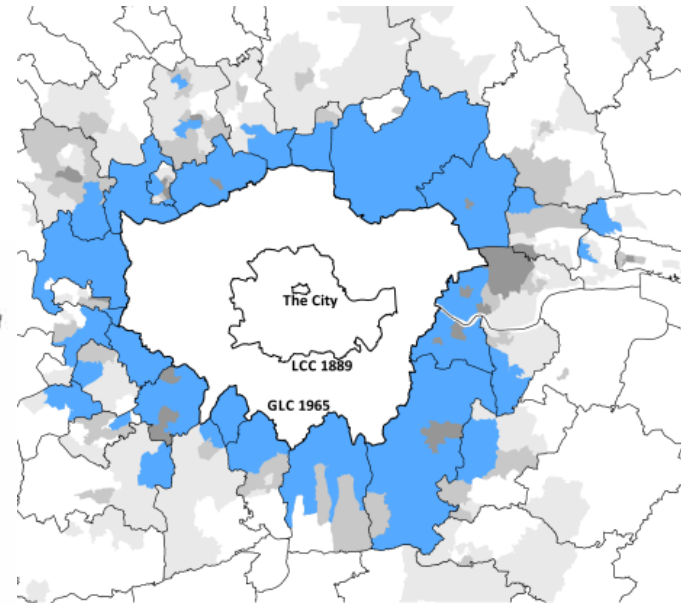
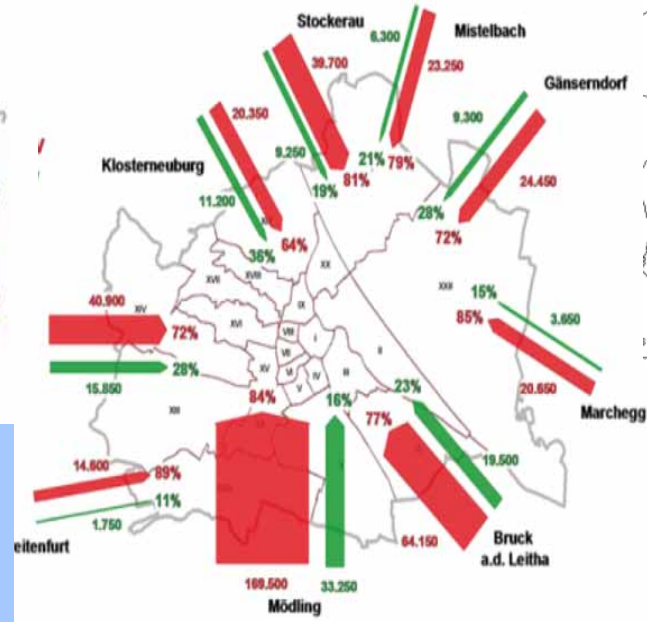
CREATE Launch Halpern 092315



# Berlin

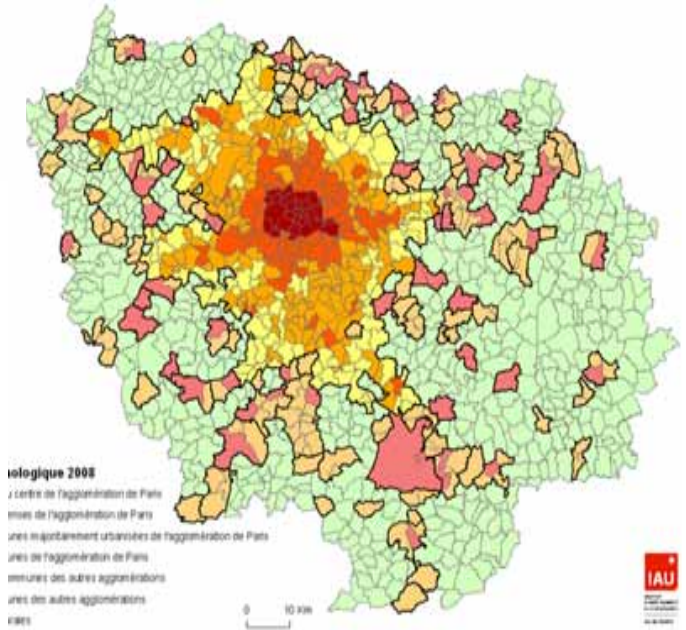


# Greater London



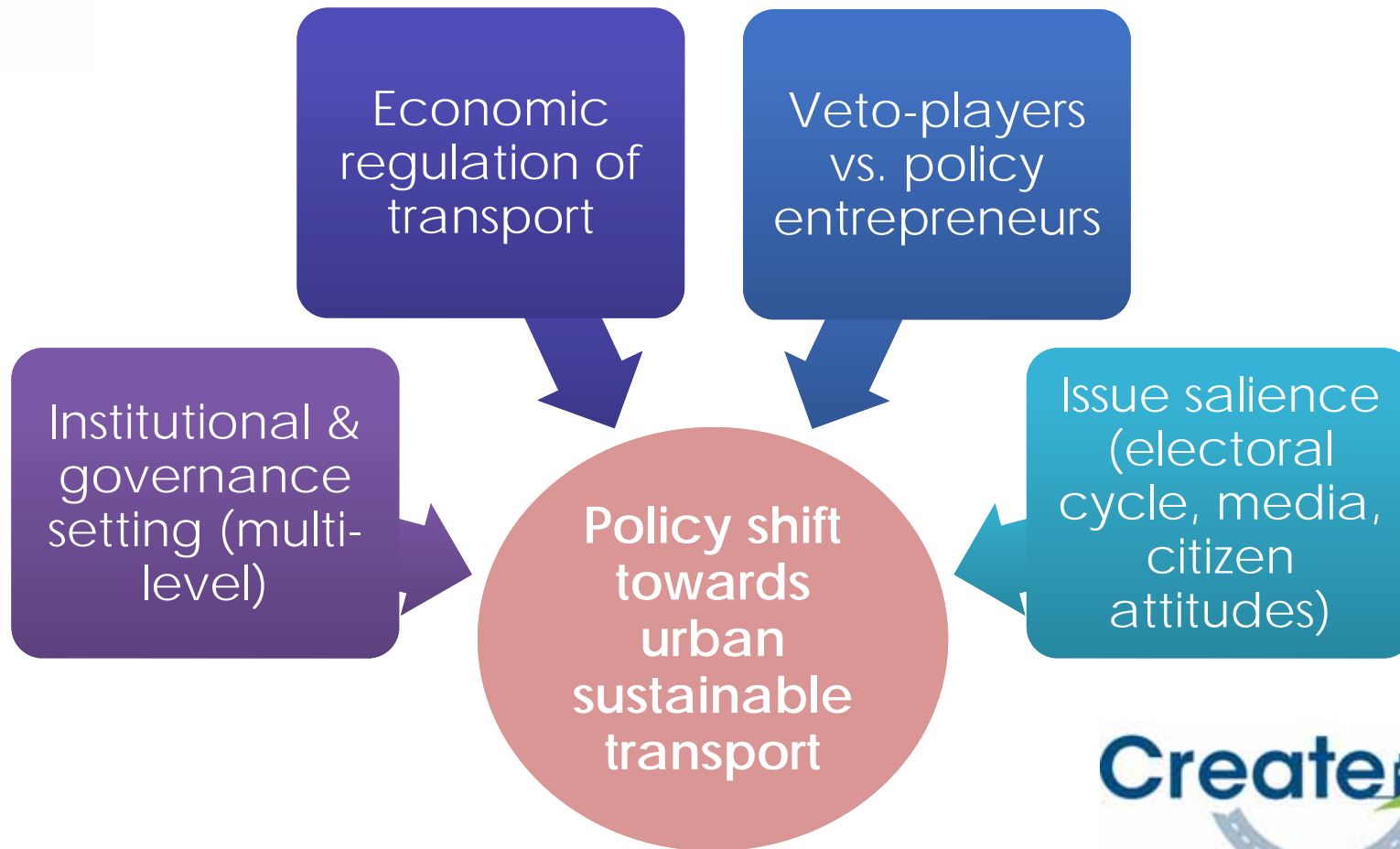
# Copenhagen

# Vienna



# Paris Ile-de-France

# Governance matters, yes but ... why and how?

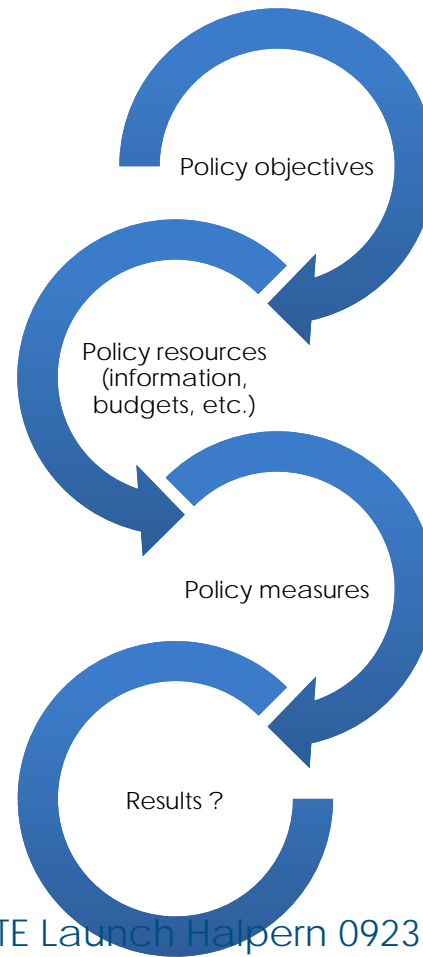


# Governance matters, yes but ...

- Is it possible for policy-makers to have an accurate anticipation of the consequences of decisions and policies?
  - Policy goals are often vague, contradictory
  - Outcomes are contingent upon a large variety of factors, changing context
  - Unintended/unwanted effects – Who gets what, when and how?
  - Additional complexity in large metropolitan areas



# Understanding transport policy dynamics over time



CREATE Launch Halpern 092315



# A qualitative approach

- Focus on “Stage 3 cities” and their evolution over time in order to speed up the process, avoid traffic growth/mitigation policies
- Identify – in close cooperation with the work done in the quantitative WP - the qualitative drivers, which have enabled shift from “traffic growth” to “sustainable transport”
- Explain transport policy dynamics in each Stage 3 city
- Lessons to be learnt and speeding up processes for other cities



CREATE Launch Halpern 092315





**SciencesPo**  
CENTRE D'ÉTUDES EUROPÉENNES



**Thank you for your attention -  
Comments welcome!**

Sciences Po, Centre d'études européennes: <http://portedeurope.sciences-po.fr/>

Sciences Po, Cities are back in town: <http://blogs.sciences-po.fr/recherche-villes/>